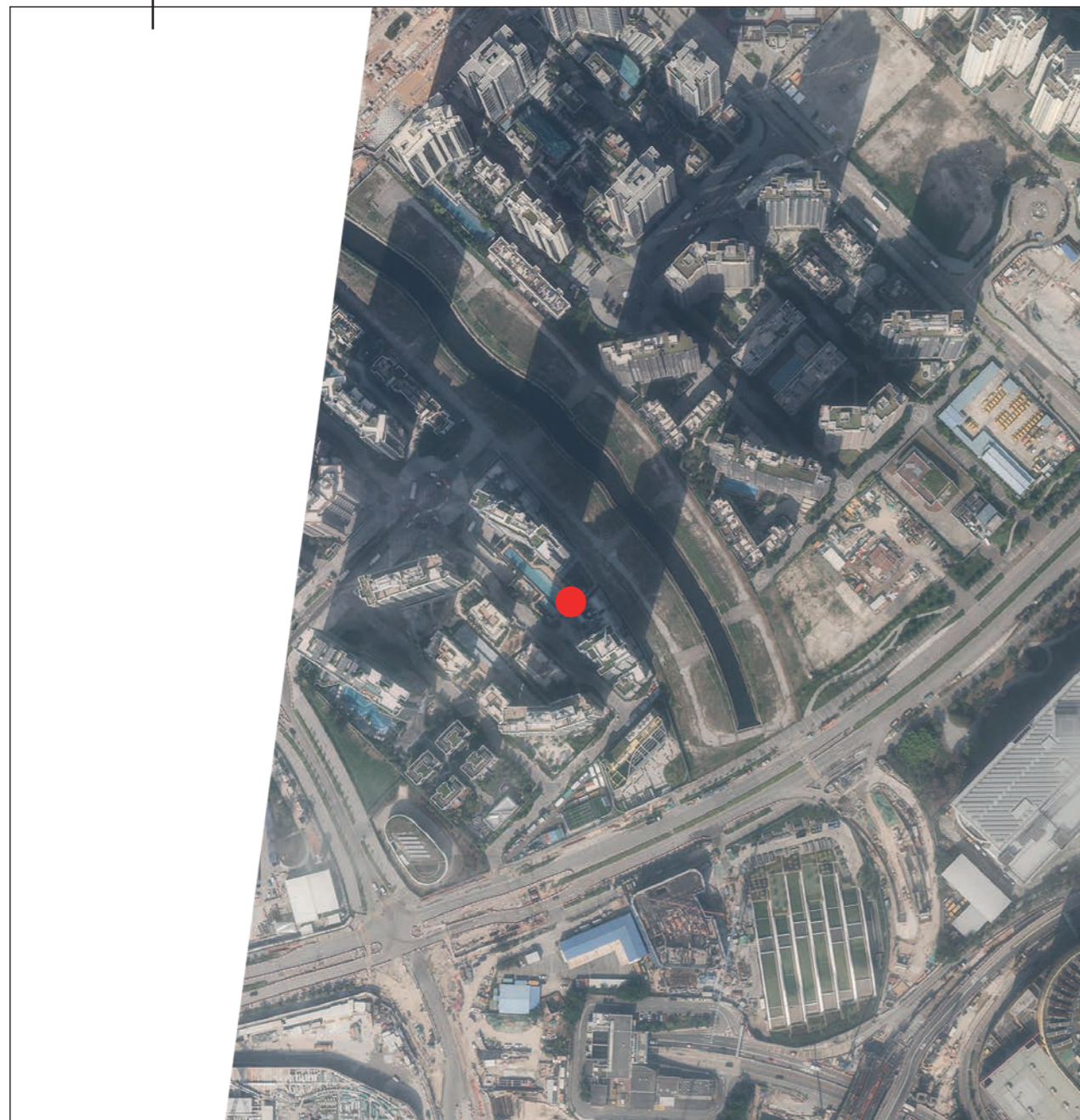


This blank area falls outside the coverage of the aerial photograph

鳥瞰照片並不覆蓋本空白範圍



● Location of the Phase
期數的位置

Survey and Mapping Office, Lands Department, The Government of HKSAR © Copyright reserved - reproduction by permission only.

香港特別行政區政府地政總署測繪處©版權所有，未經許可，不得複製。

The aerial photograph is provided by the Hong Kong GeoData Store and intellectual property rights are owned by the Government of the HKSAR. ©

航空照片由香港地理數據站提供，香港特別行政區政府為知識產權擁有人。

Adopted from part of the aerial photograph taken by the Survey and Mapping Office, Lands Department at a flying height of 6,900 feet, photo no. E167194C, date of flight: 8th December, 2022.

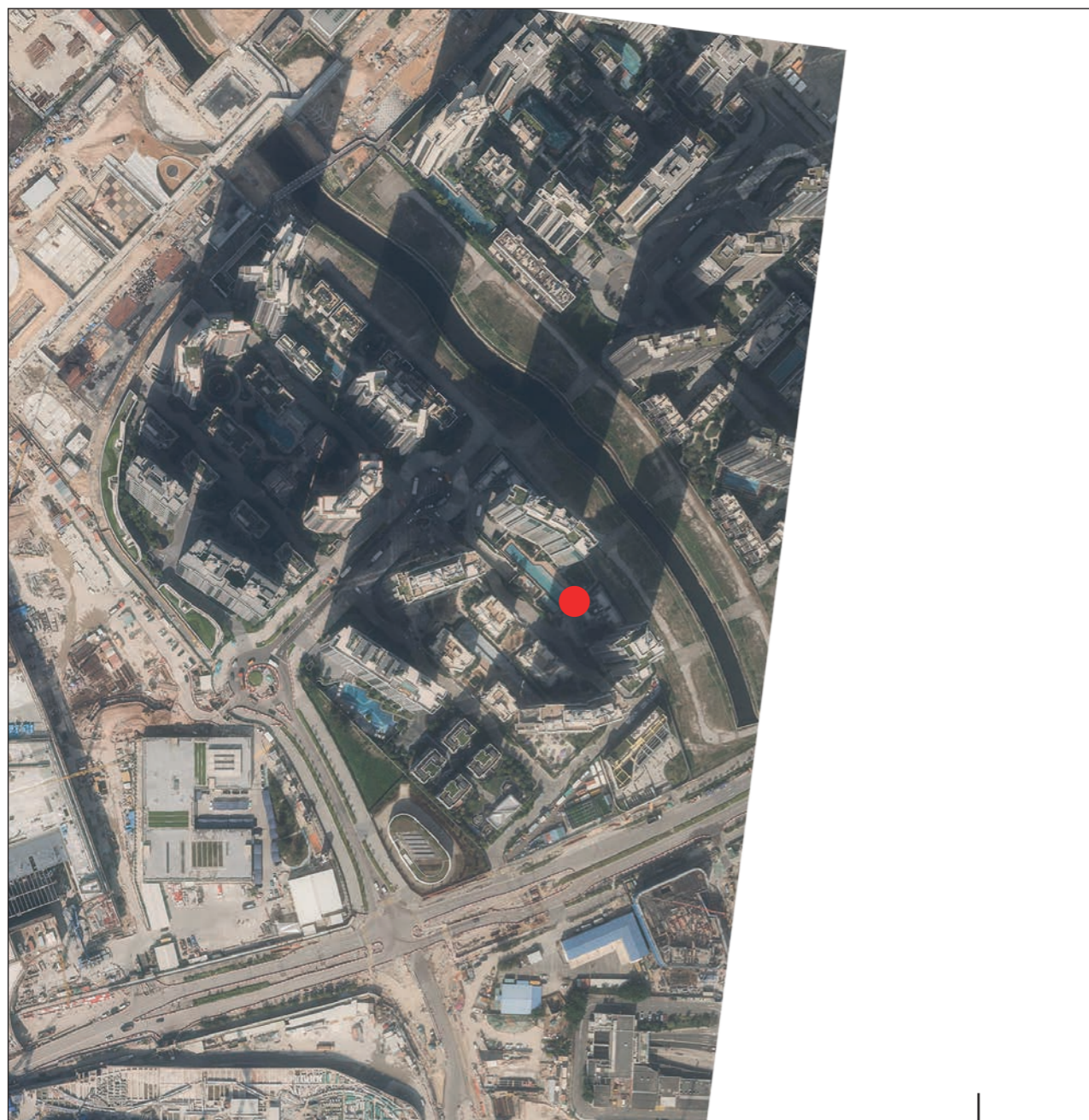
摘錄自地政總署測繪處在6,900呎的飛行高度拍攝之鳥瞰照片，照片編號E167194C，飛行日期：2022年12月8日。

Notes:

1. Copy of the aerial photograph of the Phase is available for free inspection at the sales offices during opening hours.
2. The aerial photograph may show more than the area required under the Residential Properties (First-hand Sales) Ordinance due to technical reason that the boundary of the Phase is irregular.

備註：

1. 期數的鳥瞰照片之副本可於售樓處開放時間內免費查閱。
2. 由於期數的邊界不規則的技術原因，此鳥瞰照片所顯示的範圍可能超過《一手住宅物業銷售條例》所規定的範圍。



● Location of the Phase
期數的位置

This blank area falls outside the coverage of the aerial photograph
鳥瞰照片並不覆蓋本空白範圍

Survey and Mapping Office, Lands Department, The Government of HKSAR © Copyright reserved -
reproduction by permission only.

香港特別行政區政府地政總署測繪處©版權所有，未經許可，不得複製。

The aerial photograph is provided by the Hong Kong GeoData Store and intellectual property
rights are owned by the Government of the HKSAR. ©

航空照片由香港地理數據站提供，香港特別行政區政府為知識產權擁有人。

Adopted from part of the aerial photograph taken by the Survey and Mapping Office, Lands Department at a
flying height of 6,900 feet, photo no. E167196C, date of flight: 8th December, 2022.

摘錄自地政總署測繪處在6,900呎的飛行高度拍攝之鳥瞰照片，照片編號E167196C，飛行日期：2022年
12月8日。

Notes:

1. Copy of the aerial photograph of the Phase is available for free inspection at the sales offices during opening hours.
2. The aerial photograph may show more than the area required under the Residential Properties (First-hand Sales) Ordinance due to technical reason that the boundary of the Phase is irregular.

備註：

1. 期數的鳥瞰照片之副本可於售樓處開放時間內免費查閱。
2. 由於期數的邊界不規則的技術原因，此鳥瞰照片所顯示的範圍可能超過《一手住宅物業銷售條例》所規定的範圍。